

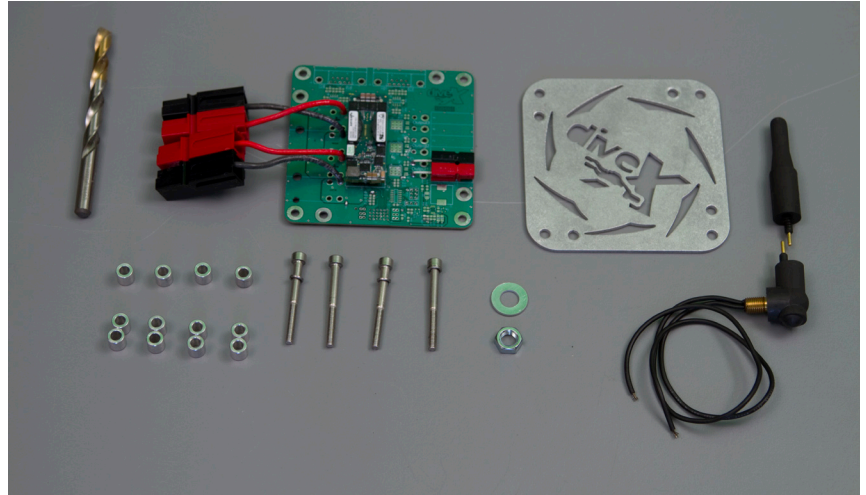


## Power Outlet Manual

www.dive-xtras.com  
4433 Russell Rd, STE 106  
Mukilteo  
WA 98275 USA  
Tel: 425 493 9600  
Fax: 425 493 9320

Parts Included in the kit you receive:

- Electronics for managing the Power Outlet.
- 3/8" Drill Bit
- Electronics plate
- 8 spacers (4 large/4 medium)
- 4 bolts
- 90 Bulkhead connector
- Dummy Plug
- Washer/ Nut for securing Bulkhead Connector
- Red and Black Anderson Connectors
- Small tube of gasket sealant



Take the 3/8" drill bit and carefully penetrate the hull where the power port is located. It is very important to drill straight into the hull. Drilling at an angle could compromise the hulls integrity and cause water leakage.

Note: It is helpful to hold a piece of metal on the other side for when you penetrate the hull. It will protect the motor and create a cleaner hole.



Insert the 90 Bulkhead connector into the hole, positioning the connector the way you want it to face. Apply a small amount of sealant around the base of the threads on the connector.





## Power Outlet Manual

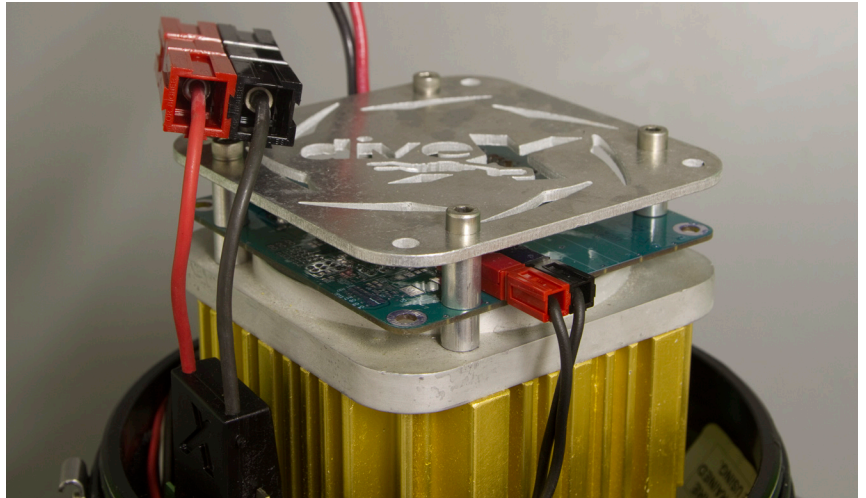
www.dive-xtras.com  
4433 Russell Rd, STE 106  
Mukilteo  
WA 98275 USA  
Tel: 425 493 9600  
Fax: 425 493 9320

Secure the E/O connector down with the washer and nut provided. Tighten down securely, careful not to overtighten or it could damage the seal. You should not be able to wiggle the connector side to side when secured down.

Once tightened, do not rotate the Bulkhead Connector.



Install the electronics board and protective cover as shown: Remove the 4 screws holding the motor top and place the components in the following order: short spacer, electronics, long spacer, protective cover. Secure with the long screws provided. Connect the main Anderson Connectors together.



Install the Anderson Connectors onto the Bulkhead Connector's wires. Make sure to match up the colors correctly or it could result in damaging the electronics. Plug the connectors into the matching terminals on the circuit board.

This picture shows the typical polarity output of canister battery packs.

Test the system out by plugging in the battery and running your accessory.

**Disclaimer:** Make sure that your equipment has the same polarity as the Power Outlet. Failure to do so could damage your equipment.





## Power Outlet Manual

[www.dive-xtras.com](http://www.dive-xtras.com)  
4433 Russell Rd, STE 106  
Mukilteo  
WA 98275 USA  
Tel: 425 493 9600  
Fax: 425 493 9320

Attach the dummy plug provided when traveling  
and when the Power Outlet is not in use.

